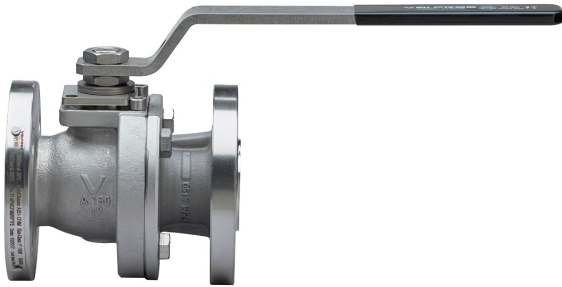
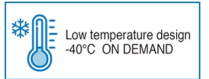


68R015

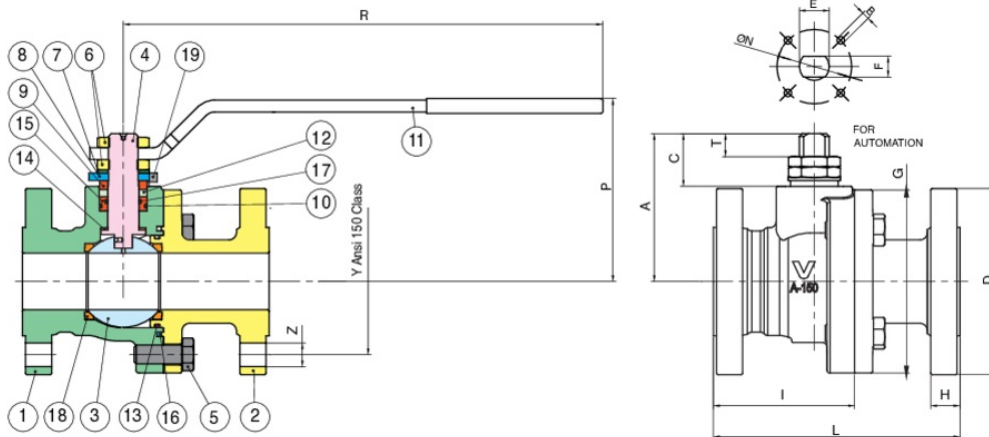
API 608 SUPER DUPLEX STAINLESS STEEL BALL VALVE



- Super Duplex Stainless steel, ANSI class 150, flanged ball valve, full port.
- API 608, ASME B16.34, ASME B16.10, ASME B16.5, ASME B1.1 design.
 - Temperature range: -4°F to 366°F.
 - 100% tested according to API 598 standards.
 - RTFE seats, packing and thrust washer.
 - Blow-out proof stem, locking handle.
 - Fire Safe API 607.
 - Antistatic Device.
 - ISO 5211 mounting pad with double “D” stem.
 - Locking device.
- 68R015: sizes 1/2” to 6”.



Technical specifications



POSITION	PART NAME	MATERIAL	N.° PIECES
1	BODY	UNS S32760 (ASTM A995-GR. 6)	1
2	END CONNECTION	UNS S32760 (ASTM A995-GR. 6)	1
3	BALL	UNS S32760 (ASTM A995-GR. 6)/A479-F55	1
4	STEM	A479-F55/A182-F55	1
5	SCREW	A193 B8 Cl.2	4
6	NUT	STAINLESS STEEL	2
7	SPRING WASHER	STAINLESS STEEL	2
8	90° STOP	AISI 316	1
9	BUSH	A479-TP316L	1
10	O-RING	FKM (VITON)	1
11	HANDLE	AISI 316	1
12	STEM SEAL	GRAPHITE	1
13	O-RING	FKM (VITON)	1
14	THRUST WASHER	RPTFE	1
15	O-RING BUSH	A479-TP316L	1
16	BODY SEAT	GRAPHITE	1
17	O-RING	FKM (VITON)	2
18	BALL SEAT	RPTFE	2
19	SCREW	A2-70	1

SIZE	D	Y	Z	H	I	L	G	P	R	A	T	E	F	ISO 5211 ØN	B	BREAK TORQUE (IN/LBS)	CV	WEIGHT LBS
1/2"	3.54	2.37	4xØ0.63	0.46	1.79	4.25	3.23	3.74	6.85	2.13	0.27	M12	8	1.65-F04	M5	66.38	16.59	5.29
3/4"	3.94	2.75	4xØ0.63	0.53	1.91	4.61	3.54	3.9	6.85	2.28	0.27	M12	8	1.65-F04	M5	115.05	30.25	7.28
1"	4.33	3.13	4xØ0.63	0.58	2.09	5	4.13	3.94	9.84	2.94	0.37	M16	10	1.96-F05	M6	168.15	55.75	10.61
1 1/2"	4.92	3.87	4xØ0.63	0.71	3.72	6.5	4.84	4.84	12.64	3.94	0.61	M20	14	1.96-F05	M6	327.45	150.39	19.18
2"	5.91	4.74	4xØ0.63	0.77	2.99	7.01	5.51	5.24	12.64	4.27	0.65	M20	14	1.96-F05	M6	495.6	260.41	26.24
3"	7.48	6	4xØ0.63	0.96	3.35	7.99	7.4	6.57	15	5.89	0.81	M24	18	2.75-F07	M8	1053.15	754.11	53.14
4"	9.06	7.5	4xØ0.63	0.96	3.54	9.02	9.25	7.32	15	6.57	0.73	M24	18	4.01-F10	M10	1654.95	1178.31	84.89
6"	11.02	9.5	4xØ0.63	1.02	9.49	15.51	12.4	-	-	9.65	1.61	M42	30	4.92-F12	M12	4469.25	3172.95	189.19