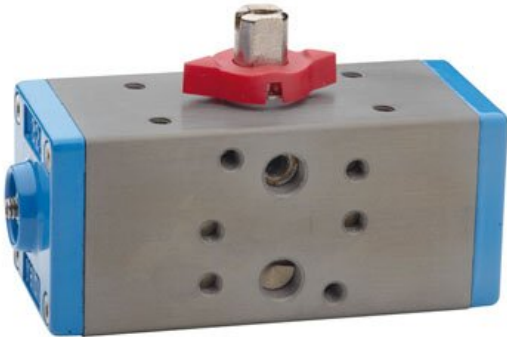
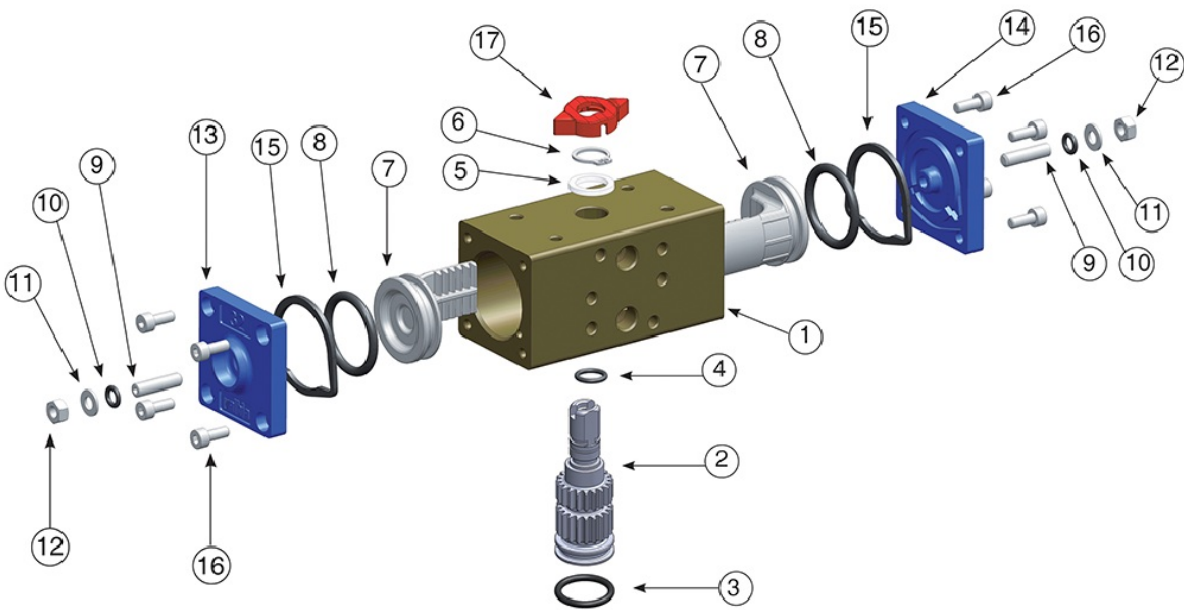
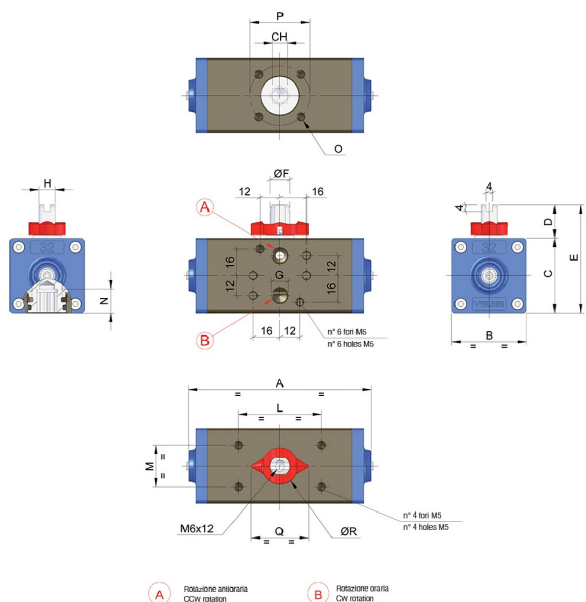


MOD. 32



Technical specifications





POSITION	PART NAME	MATERIAL	TREATMENT	N.° PIECES
1	Body	Extruded aluminium	Hard anodized	1
2	Anti-blowout pinion	Steel	Nickel plated	1
3*	O-ring	FKM (VITON)	-	1
4*	O-ring	FKM (VITON)	-	1
5	Spacer ring	POM	-	1
6	Snap ring	Steel	Nickel plated	1
7	Piston	Die cast aluminium	-	2
8	O-ring	FKM (VITON)	-	2
9	Stop bolt	Stainless steel	-	2
10	O-ring	FKM (VITON)	-	2
11	Washer	Stainless steel	-	2
12	Stop boltretaining nut	Stainless steel	-	2
13	Left end cap	Die cast aluminium	Powder-coated	1
14	Right end cap	Die cast aluminium	Powder-coated	1
15	End cap seats	FKM (VITON)	-	2
16	End cap fixing screw	Stainless steel	-	8
17	Position indicator	Thermoplastic rubber TPE	-	1

*Parts subject to wear

SIZE	PATTERN ISO 5211	CH	A	B	C	D	E	ØF	G NPT	H	L	M	N	O	P	Q	ØR
-	F03	9	4.33	1.77	1.77	0.79	2.56	0.46	1/8"	0.39	1.97	0.98	0.47	10-24 UNC 2Bx0.30	1.42	1.36	0.87