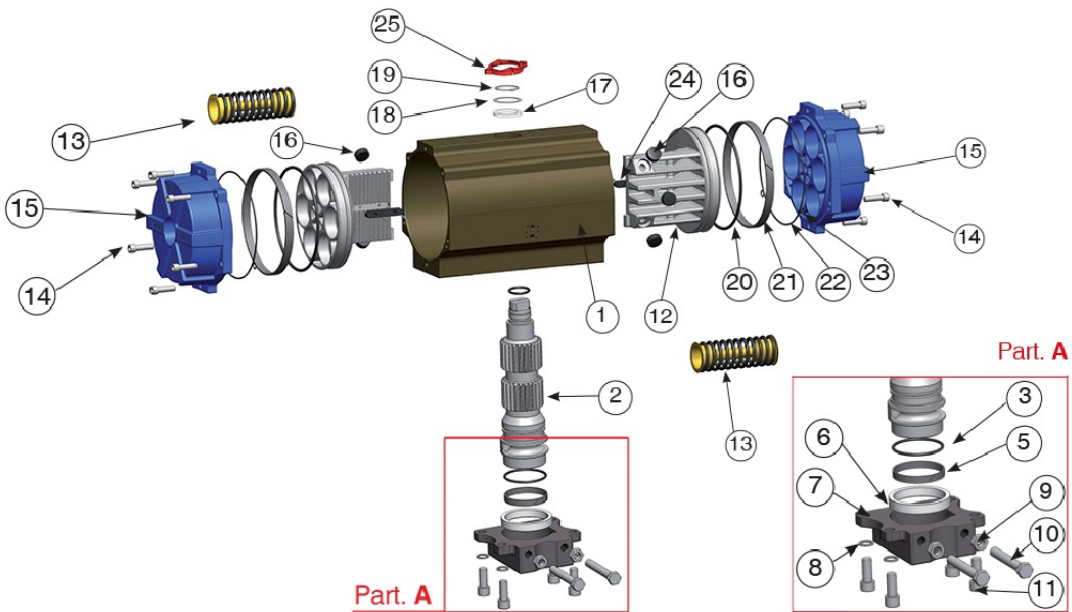
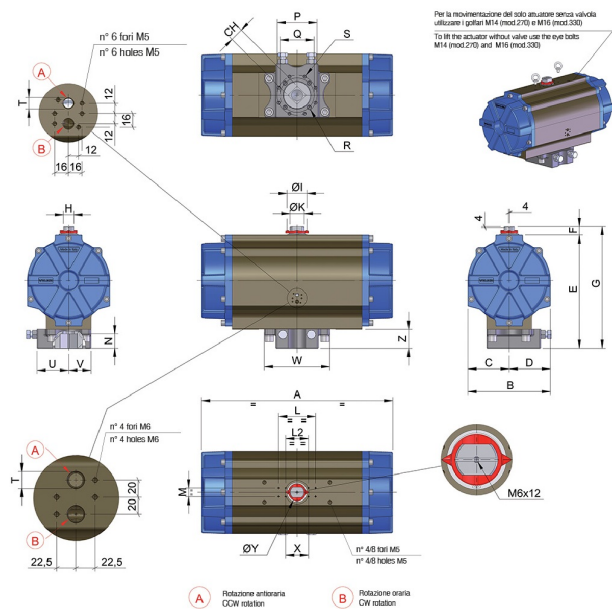


# MOD. 330



## Technical specifications





POSITION	PART NAME	MATERIAL	TREATMENT	N.° PIECES
1	Body	Extruded aluminium	Ossidato duro - Hard anodized	1
2	Anti-blowout pinion	Steel	Nichelato - Nickel plated	1
3*	O-ring	FKM (VITON)	-	1
4*	O-ring	FKM (VITON)	-	1
5*	Antifriction ring	P.T.F.E 15% graphite	-	1
6*	Antifriction ring	P.T.F.E	-	1
7	Plate	C45	Verniciato - Painted	1
8	Washer	Stainless steel	-	4
9	Stop bolt retaining nut	Stainless steel	-	2
10	Stop crew	Steel	Zincato - Zinc plated	2
11	Fixing screws	Stainless steel	-	4
12	Piston	Die cast aluminium	-	2
13	Precompressed spring	Steel	Verniciata - Painted	-
14	End cap fixing screw	Stainless steel	-	16
15	End cap	Die cast aluminium	Verniciato - Painted	2
16*	Thrust block	POM	-	8
17*	Spacer ring	POM	-	1
18	Pinion washer	Stainless steel	-	1
19	Snap ring	Steel	Nichelato - Nickel plated	1
20*	O-ring	FKM (VITON)	-	2
21*	Antifriction ring	P.T.F.E 15% graphite	-	2
22	O-ring	FKM (VITON)	-	2
23	O-ring	FKM (VITON)	-	2
24	Anti blowout key	POM	-	2
25	Position indicator	Thermoplastic rubber TPE	-	1

### \* Parts subject to wear

SIZE	PATTERN ISO 5211	CH	A	B	C	D	E	F	G	H	ØI	ØK	L	M	N	P	Q	R	S	T NPT	U	V	W	Z	X	ØY
330	F16 - F25	55**	34.69	15.83	7.91	7.91	19.88	1.97	21.85	1.42	4.29	1.97	5.12	1.18	2.44	10	6.50	3/4-10 UNC 2Bx1.18"	5/8-11 UNC 2Bx1.02"	1/2"	5.08	5.32	11.69	3.74	3.17	2.36

\* 45° square drive only.

