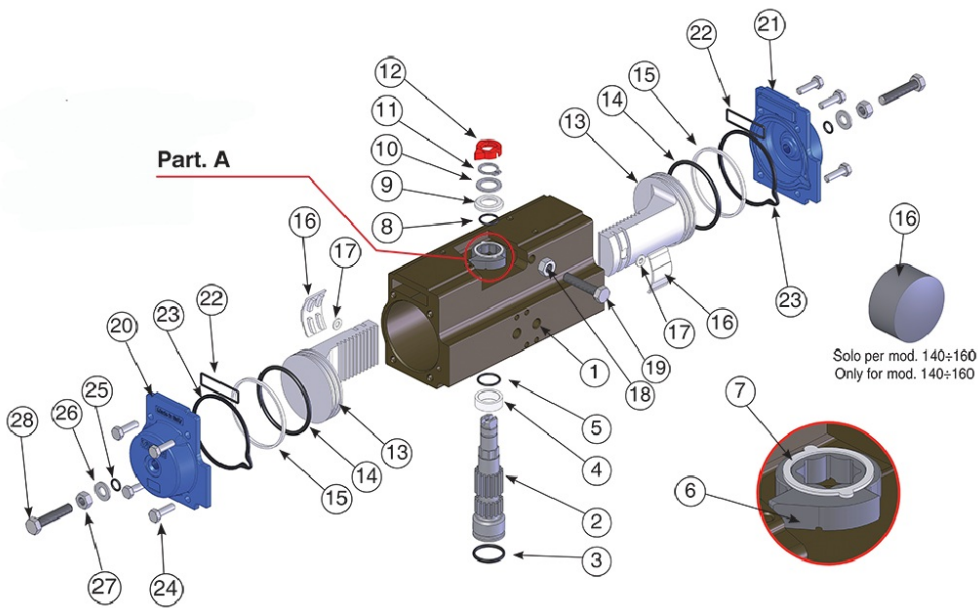
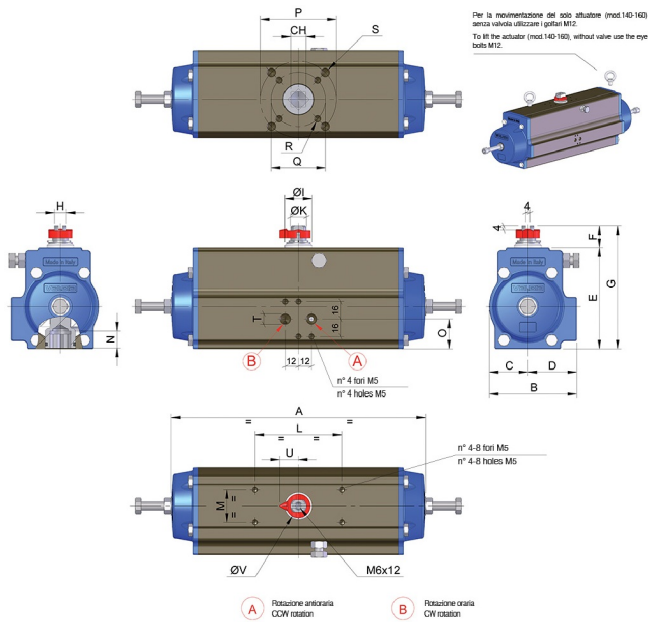


MOD. 160



Technical specifications





| POSITION | PART NAME | MATERIAL | TREATMENT | N.° PIECES |
|----------|-------------------------|--------------------------|-------------------------------|------------|
| 1 | Body | Extruded aluminium | Ossidato duro - Hard anodized | 1 |
| 2 | Anti-blowout pinion | Steel | Nichelato - Nickel plated | 1 |
| 3* | O-ring | FKM (VITON) | - | 1 |
| 4* | Spacer ring | POM | - | 1 |
| 5* | O-ring | FKM (VITON) | - | 1 |
| 6 | Cam | Stainless steel | - | 1 |
| 7 | Spacer | POM | - | 1 |
| 8* | O-ring | FKM (VITON) | - | 1 |
| 9* | Spacer | POM | - | 1 |
| 10 | Washer | Stainless steel | - | 1 |
| 11** | Snap ring | Steel | Nichelato - Nickel plated | 1 |
| 12 | Position indicator | Thermoplastic rubber TPE | - | 1 |
| 13 | Piston | Die cast aluminium | - | 2 |
| 14* | O-ring | FKM (VITON) | - | 2 |
| 15* | Antifriction ring | POM | - | 2 |
| 16* | Thrust block | POM | - | 2 [4] |
| 17 | Washer | Stainless steel | - | 2 [0] |
| 18 | Stop bolt retaining nut | Stainless steel | - | 1 |
| 19 | Stop bolt | Stainless steel | - | 1 |
| 20 | Left end cap | Die cast aluminium | Verniciato - Painted | 1 |
| 21 | Right end cap | Die cast aluminium | Verniciato - Painted | 1 |
| 22 | O-ring | FKM (VITON) | - | 2 |
| 23 | End cap seats | FKM (VITON) | - | 2 |
| 24 | End cap fixing screw | Stainless steel | - | 8 |
| 25* | O-ring | FKM (VITON) | - | 2 |
| 26 | Washer | Stainless steel | - | 2 |
| 27 | Stop bolt retaining nut | Stainless steel | - | 2 |
| 28 | Stop bolt | Stainless steel | - | 2 |

| SIZE | PATTERN ISO 5211 | CH | A | B | C | D | E | F | G | H | ØI | ØK | L | M | N | O | P | Q | R | S | T BSPT | U | ØV |
|------|------------------|----|-------|------|------|------|------|------|------|------|------|------|-----------|------|------|------|------|------|--------|--------|--------|------|------|
| 160 | F10 - F12 | 27 | 25.35 | 7.32 | 3.43 | 3.90 | 8.70 | 1.18 | 9.88 | 1.18 | 2.24 | 1.57 | 3.15/5.12 | 1.18 | 1.26 | 3.15 | 4.92 | 4.02 | M10X14 | M12x17 | 1/4" | 1.57 | 2.36 |

*Parts subject to wear

** Reinforced series DIN 471-UNI7436

(4) (0) valid for mod. 140-160 only.

The length of the adjustment bolts changes according to the angle of rotation needed.

