

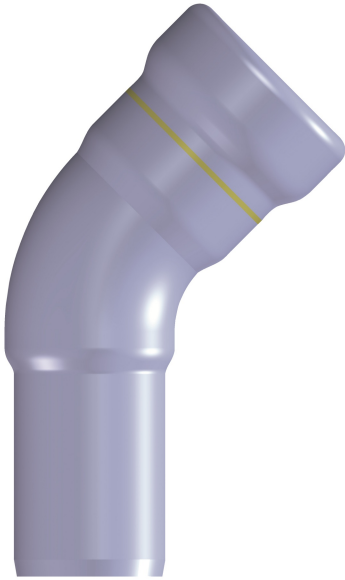


BONOMI
NORTH AMERICA

BONOMI
press
max
GAS

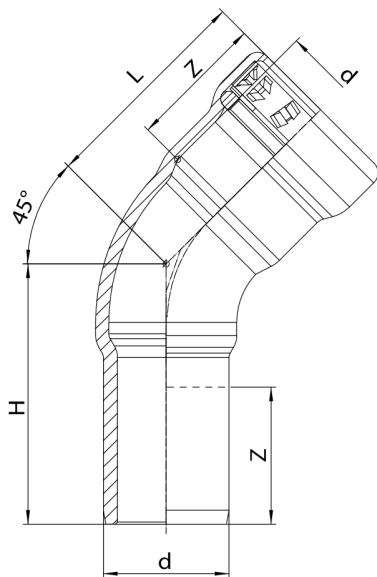
5L15

Carbon steel FTG/P 45° elbow, from 1/2" to 2".



NEW

Technical specifications



| SIZE | L | H | Z |
|--------|------|------|------|
| 1/2" | 1.67 | 1.99 | 1.06 |
| 3/4" | 1.83 | 2.19 | 1.14 |
| 1" | 2.20 | 2.52 | 1.34 |
| 1 1/4" | 2.78 | 2.99 | 1.81 |
| 1 1/2" | 2.99 | 3.07 | 1.89 |
| 2" | 3.29 | 3.58 | 1.97 |