



1670XLC LF XLC PRESS VALVE

Lead free brass ball valve with XLC EURO-PRESS connections full port.

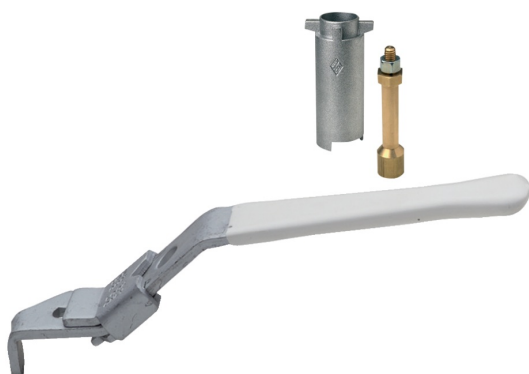
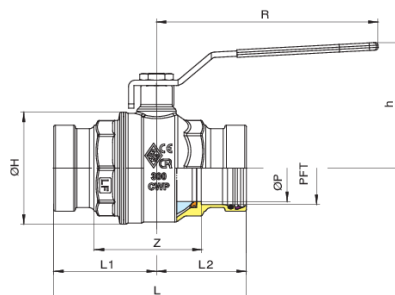
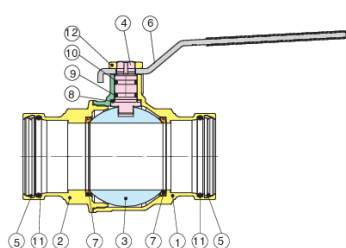
- Test pressure rating 300 psi up to 3" and 200 psi for the 4", working pressure 200 psi for all sizes.
 - Temperature range -4°F to 250°F.
 - Made in lead free dezincification resistant brass (LF-DZR).
 - Blow-out proof stem, stainless steel ball.
 - PTFE seats and double O-ring stem packing.
 - 100% electronically tested in the open and closed position at 80 psi.
 - Valve to be used in fully open or fully closed position.
- 1670XLC LF: size 2 1/2" to 4".

LEAD FREE



COMPLIES WITH CALIFORNIA AB1953

Technical specifications



The Buna O-ring is fitted to the stem of the valve as the best possible protection against potential gas leakage under extreme duty, or low pressure applications. A secondary P.T.F.E stem seal will also assure that the valve is suitable for use up to 366°F.


| POSITION | PART NAME | MATERIAL | N.° PIECES |
|----------|------------------|------------------|------------|
| 1 | BODY | LF BRASS C27453* | 1 |
| 2 | END CONNECTION | LF BRASS C27453* | 1 |
| 3 | BALL | STEEL 1.4408 | 1 |
| 4 | STEM | LF BRASS C28500* | 1 |
| 5 | COMPRESSION RING | STEEL 38NICRMO4 | 2 |
| 6 | HANDLE | STEEL DD11 | 1 |
| 7 | BALL SEAT | PTFE | 1 |
| 8 | THRUST WASHER | PTFE | 1 |
| 9 | O-RING | NBR | 1 |
| 10 | O-RING | FKM (VITON) | 1 |
| 11 | O-RING | EPDM PEROX | 2 |
| 12 | NUT | STEEL CL04 | 1 |

* **Lead free** refers to the wetted surface of pipe, fittings and fixtures in potable water systems that have a weighted average lead content not more than 0.25%. Source: California health & Safety code (116875). Vermont Act 193.


| SIZE | ØP | Z | ØH | L | L1 | L2 | H | R | CV | MAX WORK PRESS (PSI) | MAX TEST PRESS (PSI) | WEIGHT (LBS) |
|--------|------|------|------|-------|------|------|------|-------|---------|----------------------|----------------------|--------------|
| 2 1/2" | 2.44 | 3.74 | 4.09 | 7.05 | 3.76 | 3.29 | 4.57 | 8.07 | 593.06 | 200 | 300 | 8.7 |
| 3" | 2.99 | 4.45 | 4.96 | 8.27 | 4.45 | 3.82 | 4.98 | 8.07 | 958.84 | 200 | 300 | 13.6 |
| 4" | 3.94 | 5.41 | 6.54 | 10.26 | 5.28 | 4.98 | 6.54 | 10.31 | 1526.59 | 200 | 200 | 28.19 |

WARNING: This product can expose you to chemicals including lead, which is known to the State of California to cause cancer and birth defects or other reproductive harm. For more information go to www.p65warnings.ca.gov.


Certifications



UL certified



HEALTH EFFECTS



TSSA