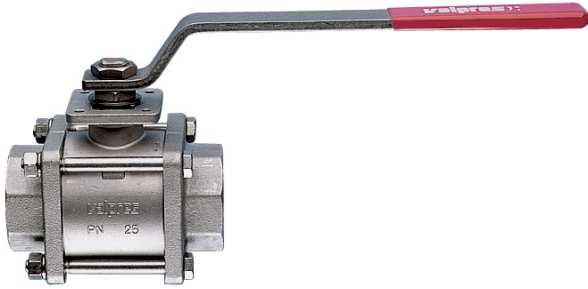


710190-V36-V6-V9 STAINLESS STEEL 3-PC V-BALL VALVE



3-piece stainless steel 1000 psi-250 psi stem, FNPT threaded V-ball valve, 30-60, 60,90 degrees V ports.

- Temperature range -4°F to 406°F.
 - Blow-out proof stem, Antistatic Device.
 - ISO 5211 mounting pad with double "D" stem.
 - 100% tested.
 - TUV T.A. Luft approved.
 - 25% carbon filled PTFE ball seats; thermal relief hole in the ball.
- 710190V36 - 710190V6 - 710190V9: size 1/2" to 4".
710061V36 - 710061V6 - 710061V9: SOCKET WELD - size 1/2" to 4".

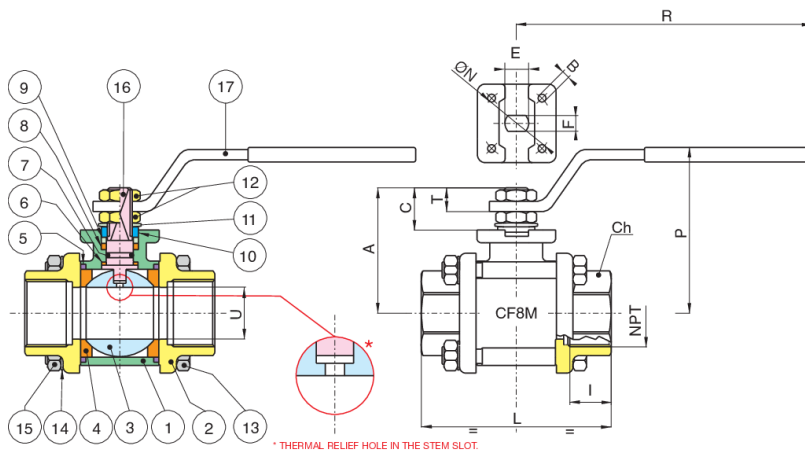
250 PSI STEAM

COMPLIES WITH NACE MR 0175/ISO 15156 AND NACE MR 0103.

V-Ball option



Technical specifications



POSITION	PART NAME	MATERIAL	N.° PIECES
1	BODY	CF8M	1
2	END CONNECTION	CF8M	2
3	BALL	AISI 316	1
4	BALL SEAT	RPTFE	2
5	O-RING	FKM (VITON)	2
6	STEM SEAL	RPTFE	1
7	O-RING	FKM (VITON)	1
8	STEM SEAL	RPTFE	1
9	PACKING GLAND	AISI 303 (1/4"-2") STEEL (2 1/2"-4")	1
10	END STOP	AISI 430 (1/4"-2") STEEL (2 1/2"-4")	2
11	SPRING WASHER	STEEL (2 1/2"-4")	2
12	NUT	AISI 304 (1/4"-2") STEEL (2 1/2"-4")	2
13	BOLT	AISI 304 (1/4"-2") STEEL (2 1/2"-4")	4
14	WASHER	AISI 304 (1/4"-2") STEEL (2 1/2"-4")	4
15	NUT	AISI 304 (1/4"-2") STEEL (2 1/2"-4")	4
16	STEM	AISI 316	1
17	HANDLE	AISI 430 (1/4"-2") STEEL (2 1/2"-4")	1

SIZE	U	I	L	CH	R	P	A	C	T	E	F	ISO 5211 ØN	B	WOG	WEIGHT LBS
1/2"	0.59	0.59	2.55	1.06	5.17	2.51	1.85	0.59	0.39	0.39	0.27	1.41-F03	0.23	250	0.88
3/4"	0.78	0.64	2.99	1.25	5.17	2.67	2.02	0.59	0.39	0.39	0.27	1.65-F04	0.21	250	1.32
1"	0.98	0.75	3.62	1.61	6.87	3.09	2.36	0.76	0.49	0.47	0.31	1.65-F04	0.23	250	2.42
1 1/4"	1.25	0.84	4.19	1.96	6.87	3.28	2.53	0.76	0.49	0.47	0.31	1.65-F04	0.21	250	3.36
1 1/2"	1.49	0.84	4.56	2.16	9.86	3.93	3.11	0.94	0.64	0.62	0.39	1.96-F05	0.25	250	4.61
2"	1.96	1.01	5.35	2.75	9.86	4.21	3.38	0.94	0.64	0.62	0.39	1.96-F05	0.25	250	7.03
3"	3.15	1.31	7.08	4.13	12.65	5.41	4.48	1.1	0.7	0.78	0.55	2.75-F07	M8	250	29.45
4"	3.93	1.54	8.54	5.11	15.01	6.16	5.39	1.35	0.86	0.94	0.7	4.01-F10	M10	250	46.79