

## BFVSTCE

### STAINLESS STEEL SANITARY BUTTERFLY VALVE

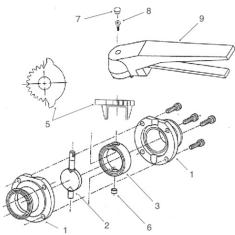


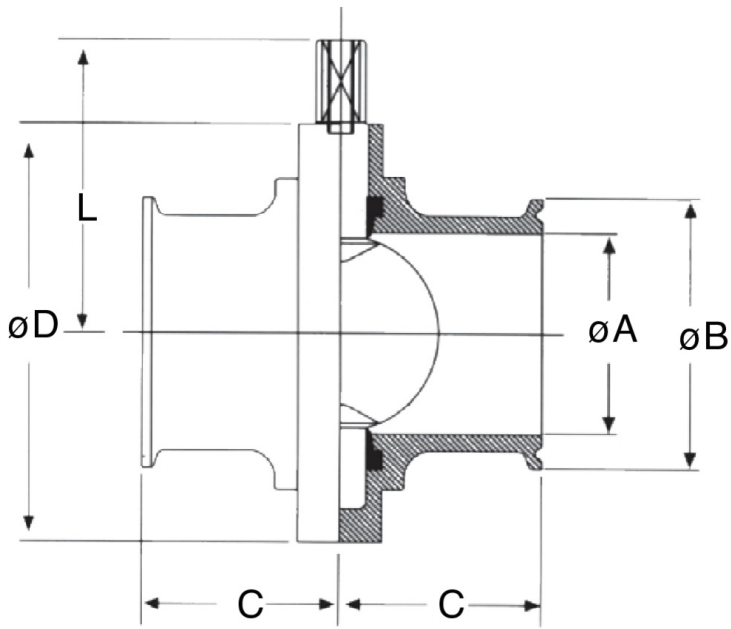
Stainless steel butterfly valve with EPDM seats and Sanitary Tri-Clamp Ends.

- AISI 316 L stainless steel.
  - EPDM seat standard.
  - Silicone or FKM (Viton) seats optional.
  - Full port, sizes 1/2" to 8."
  - Sanitary Tri-Clamp Ends.
  - Surface finish meets 3-A, FDA & USDA standards.
  - 13-position, 304SS spring loaded lever lock handle 1/2" to 6".
  - 110 PSI @ 200°F.
- BFVSTCE: size 1/2" to 8".

**NEW**

## Technical specifications





POSITION	PART NAME	MATERIAL
1	BODY HALF (2)	AISI 316L
2	DISC	AISI 316L
3	SEAT	EPDM
4	BODY BOLTS (4)	AISI 304
5	NOTCH PLATE	AISI 316
6	BODY CAP	BUNA-N
7	HANDLE CAP	BUNA-N
8	HANDLE SCREW	AISI 04
9	13-POSITION HANDLE	AISI 304

SIZE	A	B	C	D	L	BREAK TORQUE	CV	WEIGHT LBS
1/2"	3	1	1.75	3.1	2.16	60	7	3.38
3/4"	3	1	1.75	3.1	2.16	70	11	3.38
1"	0.87	1.99	1.75	3.11	2.4	140	23	3.38
1 1/2"	1.37	1.99	1.75	3.35	2.53	165	80	3.25
2"	1.87	2.52	1.87	4.13	2.93	185	230	3.84
2 1/2"	2.37	3.05	1.91	4.41	3.06	200	264	4.84
3"	2.84	3.58	2.03	4.92	3.32	255	372	5.79
4"	3.84	4.69	2.39	6.18	4	350	800	7.96
6"	5.84	6.57	3	8.2	6.35	925	1200	9.95
8"	7.93	8.54	3.28	11.22	7.83	960	2800	12.43